

# Senior leadership team



**Tom Stannard**  
Chief Executive

## Children's Services



**Melissa Caslake**  
Executive Director of Children's Services.



**Sayma Khan**  
Director of Children's Social Care.



**Cathy Starbuck**  
Director of Education and Inclusion.



**Rebecca Bibby**  
Director of Early Help and School Readiness.



**Deborah Blackburn**  
Director of Children's Commissioning, Nursing and Wellbeing.

## Adult Social Care and Health Partnerships



**Maggie Kufeldt**  
Interim Executive Director of Adult Social Care and Health Partnerships.



**Janice Lowndes**  
Director of People and Communities.



**Judd Skelton**  
Director of Adult Commissioning.



**Paul Walsh**  
Director of Adult Commissioning.



**Dr Muna Abdel Aziz**  
Director of Public Health and Wellbeing.



**Gillian McLauchlan**  
Director of Health Protection and Commissioning (Deputy DPH).



**Dr May Moonan**  
Director of Healthcare Public Health (Deputy DPH).



**Dr Fiona Hamilton**  
Public Health Consultant (Part-time).

## Salford Integrated Care Partnership (NHS GM)



**Hannah Dobrowolska**  
Delivery Director for Health and Care Integration (Salford)



**Elaine Vermeulen**  
Associate Director Finance



**Harry Golby**  
Associate Director Delivery and Transformation.



**Claire Vaughan**  
Associate Director Clinical and Care Professional Leadership.



**Michelle Williamson**  
Associate Director Quality and Safety.

## Resources and Transformation



**Vacant**  
Executive Director of Resources and Transformation.



**Joanne Hardman**  
Chief Finance Officer.



**Rachel Rosewell**  
Chief Finance Officer. From 1 February 2024.



**Iolanda Puzio**  
City Solicitor.



**Sam Betts**  
Director of Human Resources and Organisational Development.



**Steve Fry**  
Director of Digital and Customer Service.



**Jacquie Russell**  
Policy, Performance and Communications.

## Place



**John Searle**  
Executive Director of Place.



**Peter Openshaw**  
Director of Property, Housing and Regulatory Services.



**David Seager**  
Director of Operational Services.



**Jim Wensley**  
Director of Regeneration.



**Shoaib Mohammad**  
Director of Infrastructure.



**Matthew Ainsworth**  
Director of Skills, Work, and Inclusive Economy.

## Jointly managed with The Lowry



**Darren Grice**  
Director of Culture.



**Tom Stannard**  
Chief Executive

## Children's Services



**Melissa Caslake**  
Executive Director of Children's Services.

### Sayma Khan

Children's social care, safeguarding and quality assurance, looked after children, integrated social work and prevention, youth offending service, social work and improvement, transformation.

### Cathy Starbuck

Education, school improvement, SEND complex needs, virtual school for looked after children, school organisation.

### Rebecca Bibby

Early help and school readiness, starting life well service, integrated youth support services, early intervention and prevention, Strengthening Families and Family Hubs.

### Deborah Blackburn

Public health nursing and wellbeing, commissioning for public health, children's services and 0-19 health services, integrated CAMHS commissioning, Partnerships/services to children and young people.

## Adult Social Care and Health Partnerships



**Maggie Kufeldt**  
Interim Executive Director of Adult Social Care and Health Partnerships.

### Janice Lowndes

People and communities, health improvement, Salford assist welfare rights and debt advice, housing, homelessness, MCA/DOLS, adult forensic service.

### Judd Skelton

Integrated commissioning, suicide prevention, mental health crisis care, adult eating disorders.

### Paul Walsh

Integrated commissioning, care homes, care at home, dementia, learning disabilities.



**Dr Muna Abdel Aziz**  
Director of Public Health and Wellbeing.

### Gillian McLauchlan

Health protection, public health emergencies, infection prevention and control service, oral health prevention service, and commissioning for sexual health services, substance misuse services, tobacco quit services, physical activity services, weight management services, and wider determinants of health. Deputy DPH.

### Dr May Moonan

Public health intelligence and population health management, healthcare resources to reduce inequalities, improve health-related outcomes, health inequalities improvement, quality improvement, under-served and emerging communities. Deputy DPH.

### Dr Fiona Hamilton

Oversight of work programmes for Ageing Well, Tobacco Control, and Sexual Health. Public health advice for commissioned services and health inequalities initiatives delivered through primary care networks and pharmacies. Develop research collaborations for public health research studies based in Salford. Educational Supervisor on the Northwest public health training programme. Public Health Consultant (Part-time).

## Salford Integrated Care Partnership (NHS GM)



**Hannah Dobrowolska**  
Delivery Director for Health and Care Integration (Salford)

### Elaine Vermeulen

Finance, Business Intelligence, Contracting, Estates, Primary Care IT, Corporate governance.

### Harry Golby

Service transformation and redesign, Healthcare provider system development, Performance management, System assurance, Emergency Planning.

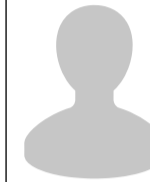
### Claire Vaughan

Clinical leadership and effectiveness, Medicines Optimisation, Quality Improvement, Workforce, HR and OD, Net Zero & Social Value, Engagement.

### Michelle Williamson

Funded Nursing Care, Safeguarding Quality Assurance, Equality, diversity and inclusion, Patient services, Individualised commissioning.

## Resources and Transformation



**Vacant**  
Executive Director of Resources and Transformation.

### Joanne Hardman

Section 151 officer, accountancy services, treasury management, internal audit, creditors and debtors, e-trading.

### Iolanda Puzio

Legal and governance, monitoring officer, management of legal contract, democratic services, elections, risk and insurance, registrars (proper officer: births, deaths, marriages), RIPA - senior responsible officer.

### Sam Betts

Human Resources, Organisational Development, Strategic Business Partnering, Workforce Equality, Diversity, Inclusion & Belonging, Employee Relations, Employee Engagement, Employee Wellbeing, HR Operations (payroll, pensions and employee benefits), Recruitment, Retention and Talent Management, Workforce Development, Apprenticeships, Job Evaluation, Remuneration, Reward and Recognition.

### Steve Fry

Digital and customer services, network and Infrastructure, ICT helpdesk, application support, digital services, cyber security, dev ops, council tax, housing benefits, business rates, print, post, admin, universal services, customer service - locality (gateways).

### Jacque Russell

Policy, performance and communications, business planning and risk management, key cities network, equalities, communications, public relations, public affairs, marketing and campaigns.

## Place



**John Searle**  
Executive Director of Place.

### Peter Openshaw

Community safety and emergency planning, urban renewal and regulatory services, housing strategy and housing development (apart from homelessness), property, strategic asset management, building surveying and facilities management.

### David Seager

Operational and commercial services, Citywide and community services, streetscene and parks management, vehicle management services, neighbourhood management, strategic client lead for Salford Community Leisure partnership.

### Jim Wensley

Regeneration and planning services, development, investment (public/private), project and programme management, business support, growth and retention, planning and environmental policy.

### Shoaib Mohammad

Infrastructure and sustainable travel, highways engineering design, landscape and structures, highways asset and network management, planning and building control, highways construction services.

### Matthew Ainsworth

Skills, work and inclusive economy - labour market, adult careers and education.

## Jointly managed with The Lowry

### Darren Grice

City wide creative, culture, arts and heritage strategy leadership, development, and delivery; stakeholder engagement and partnerships; advocacy and fundraising.